

Knowledge Co-Creation program (KCCP) of the Japan International Cooperation Agency (JICA)

Improvement of Accessibility for Social Inclusion - Barrier-free Environment for All

Presented by: Alhassan Foundation's Founder & President: May ZeinElDein

Why Alhassan Foundation?



Alhassan Foundation is a registered developmental organization under the Ministry of Social Solidarity with registration number 711, also it's a Disabled People's Organization (DPO), as more than 50% of the board members are wheelchair users, in addition to 80% of the foundation's employees are permanent wheelchair users.



www.globalgiving.com
Arab African Bank: 705750
National Bank of Egypt: Alhassan Foundation
Mobile: 010 1111 2666
E-mail: info@alhassan-fdn.org

Vision & Mission

Vision:

To be the pioneering developmental organization that is changing society's perception towards PWDs, and shedding the light on their potentials & capabilities, and even changing the misconception throughout Egypt & the MENA region in physically challenged people's mind to believe in being DIFFERENTLY ABLED.

Mission:

Leading the DIFFERENTLY ABLED persons to the ultimate level of physical & financial independence, which pave the way for reaching to the highest tier of inclusion & integration in society through participating in our diversified projects that aim to create innovative solutions in accordance with the latest international practices in this field.



About the Founder & President

Catalyst for change on a national and international level in the field of physical challenges through practically applying all aspects of diversity; inclusion; acceptance; accessibility; awareness & more.

May has 20 years of professional and entrepreneurial accumulated experience in various multinationals inside and outside Egypt with current focus on social entrepreneurship and serving humans with physical challenges through Alhassan Foundation for Differently Abled Inclusion

May ZeinElDein is the founder & president of Alhassan FDN; before that worked for several Multinational Corporations & Funding/Development Entities: GLZ, Seimens & Vodafone. May is leading a pilot Foundation aiming for inclusion of humans with physical challenges through offering "tailored solutions" to our FDN members throughout 8 diverse projects.

May ZeinElDein
Founder & President



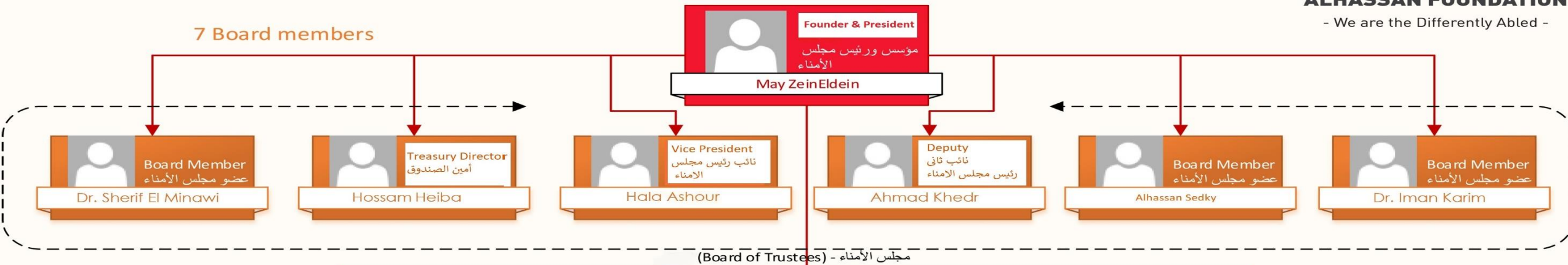
Alhassan Foundation for differently abled inclusion Organization Chart (2017/2018)



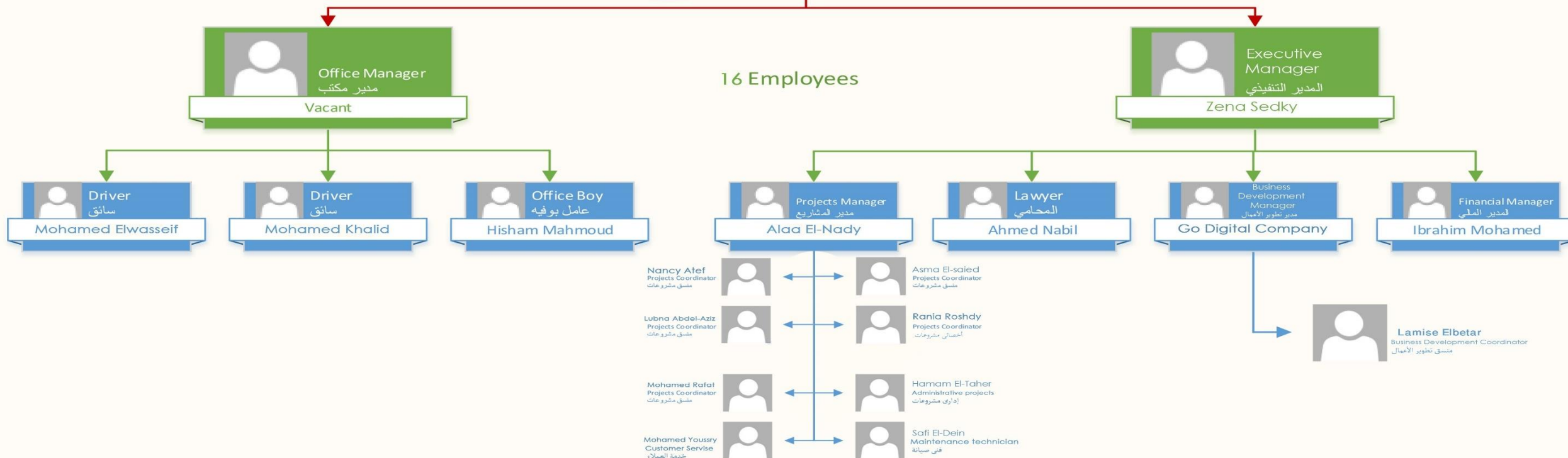
ALHASSAN FOUNDATION

- We are the Differently Abled -

7 Board members



16 Employees



Challenges

There are several challenges the foundation is facing as an advocate for wheelchair users in our society such as:

- **Social Awareness:** facing issues relevant to Acceptance, Equality, Ignorance, and Self-Worth.
- **Inclusion:** challenges applying effective Integration in Schools, Job market, Sports, Universities..etc.
- **Accessibility & Facilitation:** that includes Transportation, Roads, and Other Mobility issues.
- **Bureaucracy:** that includes Law & regulations.



Metro Accessibility Guide



Strategy & Plans

- Alhassan Foundation initiated its 8 diverse, but complementary projects to tackle most of these previously mentioned challenges.
- Our plans is to be the first Leading HUB for the differently abled people across the region.
- Advocating for wheelchair users in Egypt, and empowering them physically & financially to be able to reach the highest tier of inclusion & integration in society.
- We aim to develop these current projects in accordance with the latest international practices in this field.



Expectations

1. Advocating for improving Accessibility in terms of infrastructure, schools, sport clubs, universities, sidewalk..etc.
2. Having our kids on wheels involved in sports & Arts activities all over Egypt.
3. Ensuring that Families & parents networking is a key factor in changing the society mindset about PWDs.
4. Learning from the Japanese experience new advanced ways to solve mobility issues in terms of efficient wheelchairs, and independent living.
5. Intending to form a team from our program's coordinators to study all the output of the training and reflect it on our 8 diverse projects for better physical & financial independence.



Current Situation in Egypt



Egypt is having a major issue with accessibility and social awareness whether in public transportations, roads, workplaces, and most of public places.



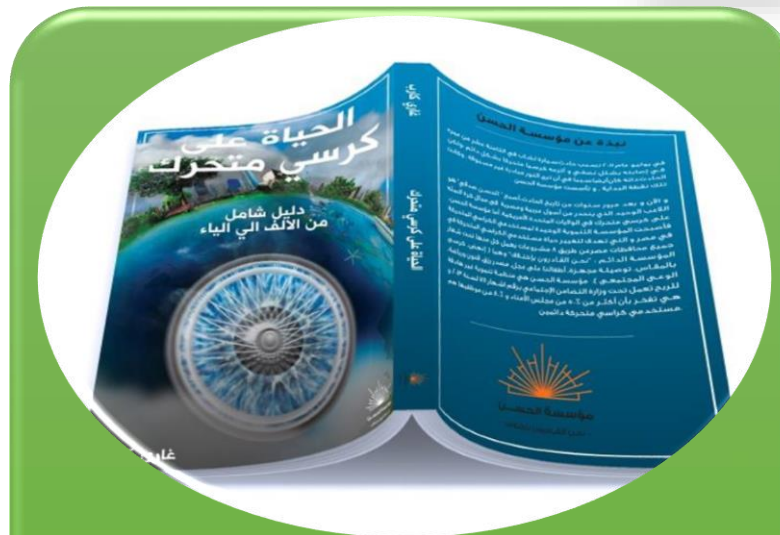
Our Impact



Several activities to include humans with physical challenges in our society through our 8 diverse projects.



Fostering “I CAN - DO” attitude in all our beneficiaries .. We are the Differently Abled.



We are about to launch a translated into Arabic version of “Life on Wheels” by the end of the year to be like a manual for each wheelchair user to accommodate with his/her new life style.

